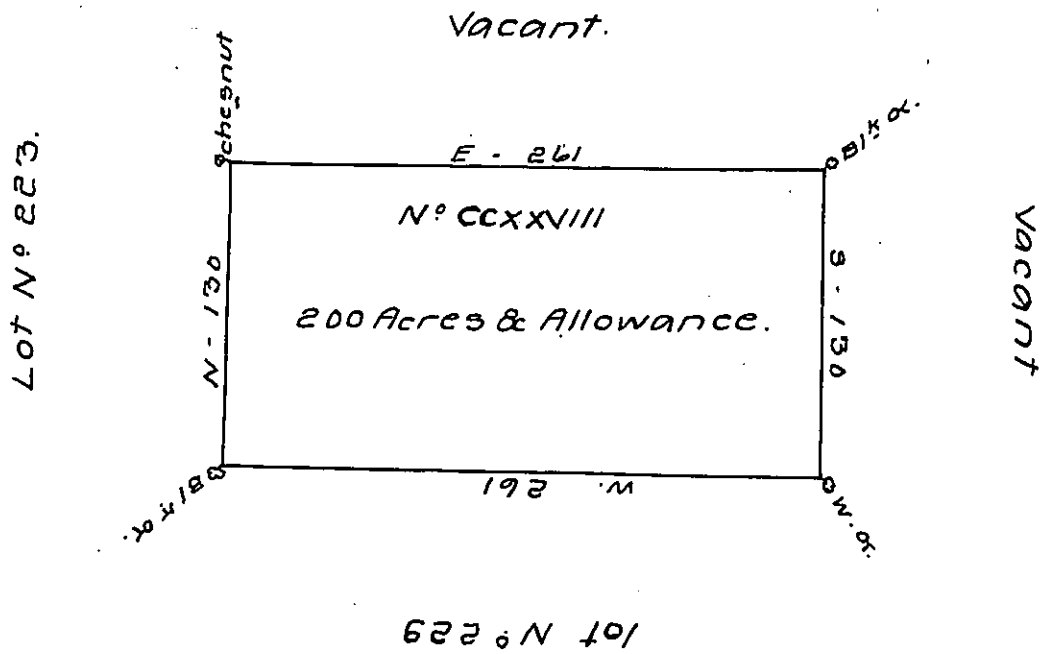


7/2/2



In Pursuance (ob) an Act of General Assembly of the State of Pennsylvania pass (ob) the 24th 27 Day of Feb (ob) ary 1785 Entitled an act for directing the Mode of Distributing the Donation Land promised the troops of this State Commonwealth and by order of the Surveyor General, with the Approbation of the Honorable the Executive Council I have surveyd on the 17th Day of October 1785, the above Described Tract of Two Hundred acres of land & the allowance of six % Cent for roads N° CCXXVIII. situate in District N° 2, on the West side of Alle-gany River in Westmoreland County.

To John Luke's Esq^r } Jn^o Henderson D.S.
 Surveyor General. }

IN TESTIMONY that the above is a copy of the original remaining on file in the Department of Internal Affairs of Pennsylvania, made conformably to an Act of Assembly approved the 16th day of February, 1833, I have hereunto set my Hand and caused the Seal of said Department to be affixed at Harrisburg, this Sixteenth day of February 1921

J. F. Woodward
 Secretary of Internal Affairs.